



# Plant the Future



ეროვნული პარკების სამსახური



სოფლის მეურნეობის  
პროექტების მართვის სააგენტო



# Components:

---

1

The components of co-financing gardens

1.1

Subcomponents of financing of Berries

2

Co-financing components of the nursery gardens

Every beneficiary may take advantage of both components and subcomponents of the project



# Goals of the Project

---



To facilitate the cultivation of Georgia's agricultural land with the purpose of effective use for arranging new perennial gardens of modern standards

To replace imported products and increase export potential

To support the production of local, high quality, and phytosanitary clean plant propagation material (sapling)

To arrange new gardens and quantitative and qualitative improvement of fruit-growing sector







# The components of co-financing of Gardens

# Financial Assistance

---



# Financial Assistance

---

Purchasing of saplings

Maximum 70 % of the cost

Installation of drip irrigation system

Maximum 50% of the cost – no more than 2,500 GEL per 1 - ha

Cooperatives

Delivery of pickling machines

## Notes:

- The amount of co-financing per 1 ha must not exceed - 10,000 GEL (except for Blueberry culture, when the amount of co-financing shall not exceed 15,000 GEL)
- A single beneficiary is allowed to cultivate maximum 20 ha land for arranging perennial gardens
- The maximum amount of funding shall not exceed 100,000 GEL



[www.apma.ge](http://www.apma.ge)



აგრარული პროექტების მართვის ავტომატიზირებული სისტემა

☎ 1501

სოფლის მეურნეობის  
პროექტების მართვის სააგენტო



# Financial assistance cover the following regions by cultures

## Kakheti

apple, raspberry, blackberry, apricot, kiwi, peach, plum, sour cherry, wild plum, olive, persimmon, pomegranate, walnut, almond, nuts, pear, cherry, quince, pistachio, grape.

## Shida Kartli

apricot, almond, dogwood, walnut, peach, plum, wild plum, sour cherry, currant, gooseberries, raspberries, apple, pear, cherry, blackberry, quince, grape.

## Kvemo Kartli

apple, peach, plum, wild plum, sour cherry, apricot, currant, gooseberries, raspberries, walnut, almond, pomegranate, persimmon, pear, cherry, blackberry, quince, grape.

## Mtskheta-Mtianeti

almond, peach, plum, wild plum, sour cherry, currant, gooseberries, raspberries, walnut, apple, pear, cherry, blackberry, quince, grape.

## Samtskhe-Javakheti

peach, plum, wild plum, sour cherry, currant, gooseberries, raspberries, walnut, apple, pear, cherry, blackberry, quince, grape.

## Guria

blackberry, raspberry, tangerine, lemon, plum, wild plum, cherry, blueberries, persimmon, kiwi, feijoa, nuts, apple, pear, sour cherry, walnut, grape.

## Adjara

walnut, tangerine, orange, lemon, plum, wild plum, sweet cherry, blueberries, persimmon, kiwi, feijoa, nuts, apple, pear, cherry, raspberry, blackberry, grape.

## Imereti

blueberry, blackberry, plum, wild plum, sweet cherry, currant, gooseberries, raspberries, persimmon, walnut, nuts, apple, pear, cherry, grape.

## Racha-Lechkhumi – Lower Svaneti

plum, wild plum, sour cherry, persimmon, walnut, nuts, apple, cherry, pear, raspberry, blackberry, quince, grape.

## Samegrelo-Upper Svaneti

walnut, apple, tangerine, orange, lemon, plums, wild plum, blueberries, persimmons, kiwi, feijoa, nuts, pears, cherry, raspberry, blackberry, grape.



[www.apma.ge](http://www.apma.ge)



აგრარული პროდუქტების მართვის ავტომატიზირებული სისტემა

☎ 1501

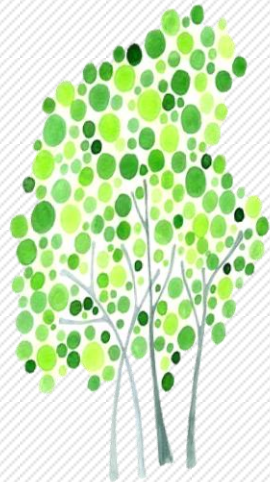


სოფლის მეურნეობის  
პროექტების მართვის სააგენტო



# Criteria of Compliance

---



## Criteria of Compliance

---

- Natural as well as legal entities are allowed to participate in the project;
- In order to get co-financing, the beneficiary must own the land with the total area of minimum 1 ha (or under the leasing for at least 10 years);
- Drip irrigation system is not voluntary in West Georgia, particularly in Guria, Samegrelo and Adjara for the cultivation of nut crops;
- The plot should be cultivated;
- The plot of land must be supplied with permanent water source;
- The plot of land, which is intended for the gardens, must not be under lien;
- The application must include the minimum amount of certain plants that shall be planted on 1 hectare.



# Technical Assistance

---



Beneficiaries who will be granted financial assistance will also be trained in the following issues:

1

Practical training in the plant pruning technologies

2

Implementation of the Integrated Pest Management Systems - IPM

3

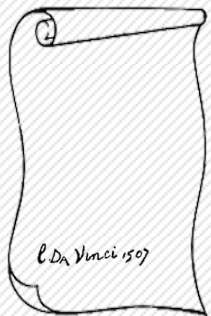
Training on the irrigation or gardens and plant feeding issues





# Documents to be submitted

---



# Documents to be submitted

---

1	A filled in application form
2	an extract from the Register of Entrepreneurs (in case of legal persons)
3	Registration certificate (in case of cooperatives)
4	Copy of the ID
5	a notice from the Revenue Service on the absence of the debts
6	Certificate of Scientific and Research Center on feasibility and compliance of the plot of the land
7	Certificate approving the land ownership
8	Certificate on land processing/cultivation issued by the territorial body of the Ministry of Agriculture of Georgia
9	Invoices (for saplings, irrigation system)
10	Document certifying the co-financing availability – bank reference about having the appropriate amount on the bank account
11	Bank Details



# Co-financing Component of Nursery Gardens

## Beneficiaries – Nursery Gardens Co-financing Components

---

1


Legal entity/Individual Entrepreneur registered in Georgia



[www.apma.ge](http://www.apma.ge)



აპმის აპროფესიონალი

 1501

სოფლის მეურნეობის  
პროექტების მართვის სააგენტო





# Financial Assistance

---



Allocation of targeted funds for potential beneficiaries in a form of co-financing for the cultivation of nursery gardens


Co-financing shall be provided on the basis of the detailed project submitted by the beneficiary

Co-financing is maximum 50% of the total project cost



[www.apma.ge](http://www.apma.ge)



 1501

სოფლის მეურნეობის  
პროექტების მართვის სააგენტო



The maximum amount of allocated fund must not exceed 150 000 GEL  
per beneficiary

---

The project cost for arranging nursery gardens does not cover the cost  
of land works and fencing



[www.apma.ge](http://www.apma.ge)



პროექტის მართვა

☎ 1501

სოფლის მეურნეობის  
პროექტების მართვის სააგენტო



Funds for co-financing Nursery Gardens component can be used only for the following purposes:

purchasing virus-free seedlings

purchasing intensive virus-free seedlings

purchasing mobile laboratory equipment

installation of modern irrigation system

Arranging Greenhouse structures

Arrangement of storage refrigerates for seedlings

The purchase of special equipment





# Technical Assistance

---



Beneficiaries, who will be granted financial assistance, will also be trained in the following issues:

Plant propagation technologies

Sapling certification principles



# Criteria of Compliance

---



Only legal persons of individual entrepreneurs are allowed to participate in the project

For obtaining co-financing the beneficiary must own an agricultural plot of land, which is intended for the arrangement of nursery gardens (might be under the leasing from the State for at least 10 years)

The beneficiary must be of appropriate qualification


Only those beneficiaries will be financed who have arranged nursery gardens, where crops envisaged under the program “Plant the Future” will be cultivated

Potential beneficiary, who has arranged nursery gardens by means of financing, is allowed to cultivate one kind as well as various kinds of perennial crops



[www.apma.ge](http://www.apma.ge)



 1501

სოფლის მეურნეობის  
პროექტების მართვის სააგენტო



The plot of land, which is intended for the nursery gardens, must be cultivated and suitable for gardening

Supplied from a permanent water source

The plot of land, which is intended for the nursery gardens, must be fenced as required

The capacity of the planned nursery gardens must be 50 000 saplings per year





# Stages for obtaining financing



A beneficiary must submit an application form for arranging nursery gardens


The beneficiary shall work out and submit a detailed project enclosed with other documents to the Agency

The Agency, together with the commission existing in the Scientific and Research Centre, shall revise the Project and make a conclusion



[www.apma.ge](http://www.apma.ge)



 1501

სოფლის მეურნეობის  
პროექტების მართვის სააგენტო



The Agency shall submit the project together with the conclusion to the co-financing committee for approval

In case of approval, the Agency shall determine the detailed provisions of financing and draw-up the agreement with the beneficiary



## Documents to be submitted

---

1	A filled application form
2	An extract from the Register of Entrepreneurs
3	Copy of the ID card of the Director/an authorized person
4	A notice from the Revenue Service on the absence of debts
5	Certificate on feasibility and compliance of the plot of land for gardening
6	Certificate approving the land ownership
7	Certificate on land processing/cultivation
8	Invoices/agreements concluded
9	Document certifying the co-financing availability
10	Bank Details

## Subcomponent of Berries financing

---

A new sub-component was added to the project “Plant the Future” in 2018, the goal of which is:

- To facilitate the growth of financial well-being of local population
- Replacement of existing uncultivated land areas and widespread low-income one-year crops with high-yielding perennial berries



# Targeted area of Berries financing sub-component

---

## Mtskheta-Mtianeti

Dusheti, Tianeti, Mtskheta and Kazbegi Municipalities;

## Imereti

Sachkhere, Tkibuli, Chiatura, Kharagauli, Baghdati, Vani, Khoni and partially Zestaponi Municipalities (Patara Gantiadi, Leladziseuli, Zeda Tsiplavake, Sanakhshire, Amsaisi (Ulevi), Satsable, Gaghma Boslevi, Gamoghma Boslevi)

## Guria

Ozurgeti, Lanchkhuti and Chokhatauri Municipalities;

## Racha-Lechkhumi - Lower Svaneti

Ambrolauri, Lentekhi, Oni and Tsageri Municipalities

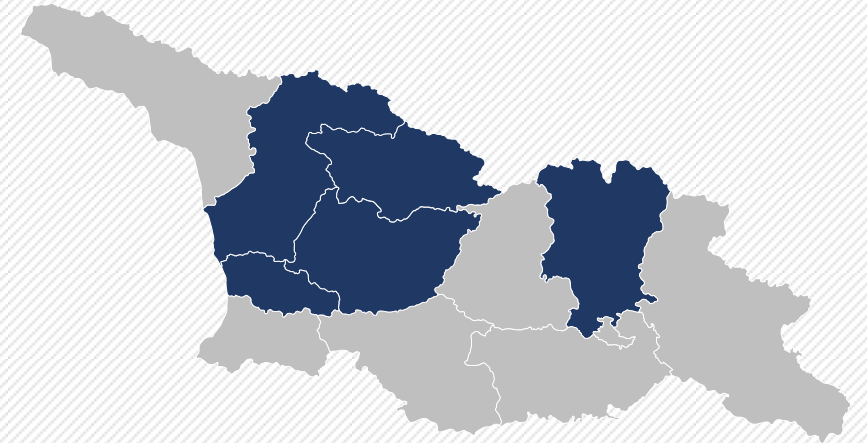
## Samegrelo – Upper Svaneti

Martvili, Chkhorotsku and Tsalenjikha Municipalities;

Crops to be cultivated in the framework of Berries financing:

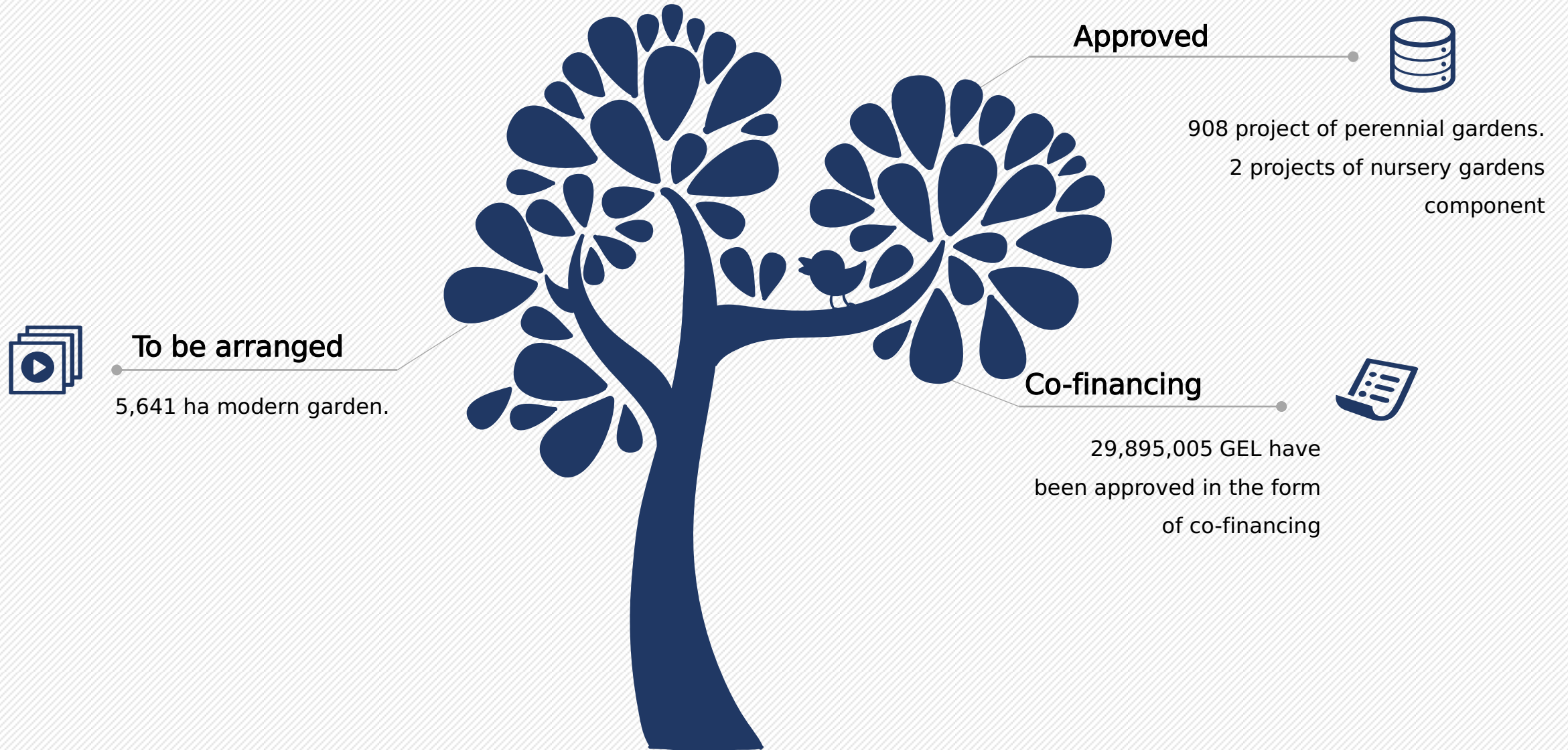
Blueberry; Blackberry; Raspberry;

Financing - 100%



# Results

---





# Thanks for attention

## 1501

სოფლის მეურნეობის  
პროექტების მართვის სააგენტო

